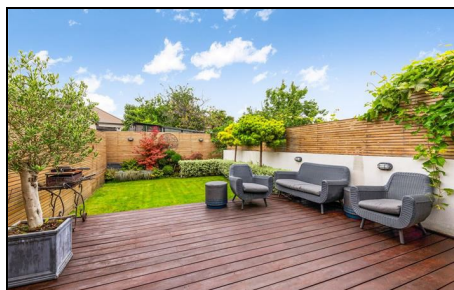


Hawthorne Avenue Mitcham, CR4 3DN

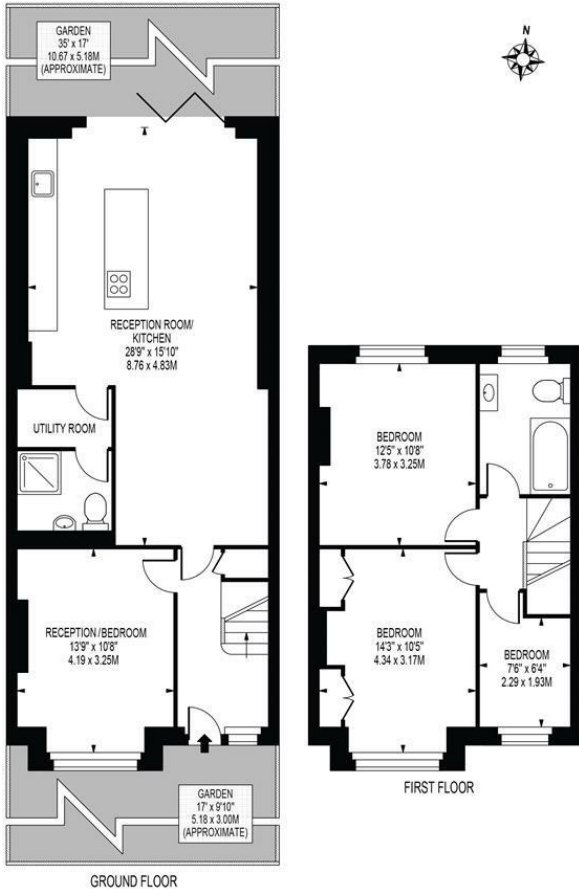
£600,000 Freehold



A truly exceptional three/four bedroom rear extended terraced house located on a sought after tree lined road close to Tube Station, Tram Stop and Hypermarket, offered to the market with no onward chain. Comprising of a separate good sized living room, downstairs W/C with shower, newly fitted modern fitted and fully integrated kitchen/diner with family area and underfloor heating, utility room and direct access to the private low maintenance rear garden. Upstairs you will find two double bedrooms, single bedroom and a modern style family bathroom. Homes of this quality are extremely rare to the market and we urge you to view early to avoid disappointment.

HAWTHORNE AVENUE

APPROXIMATE GROSS INTERNAL FLOOR AREA: 1137 SQ FT - 105.63 SQ M



FOR ILLUSTRATION PURPOSES ONLY

THIS FLOOR PLAN SHOULD BE USED AS A GENERAL OUTLINE FOR GUIDANCE ONLY AND DOES NOT CONSTITUTE IN WHOLE OR IN PART AN OFFER OR CONTRACT. ANY INTENDING PURCHASER OR LESSEE SHOULD SATISFY THEMSELVES BY INSPECTION, SEARCHES, ENQUIRIES AND FULL SURVEY AS TO THE CORRECTNESS OF EACH STATEMENT. ANY AREAS, MEASUREMENTS OR DISTANCES QUOTED ARE APPROXIMATE AND SHOULD NOT BE USED TO VALUE A PROPERTY OR BE THE BASIS OF ANY SALE OR LET.



- Three/Four Bedroom House
- Recently Refurbished
- Stunning Rear Extension
- Beautifully Presented
- Private Rear Garden
- Close to Tube & Amenities
- No Onward Chain
- EPC Rating : D
- Merton Council Tax Band : C

Energy Efficiency Rating

	Current	Potential
Very energy efficient - lower running costs		
(92 plus) A		
(81-91) B		87
(69-80) C		
(55-68) D	63	
(39-54) E		
(21-38) F		
(1-20) G		
Not energy efficient - higher running costs		
England & Wales	EU Directive 2002/91/EC	

For Free Mortgage Quote and Best Mortgage Rates, call an Ellisons Mortgage Advisor on 020 8544 0518



Although these particulars are believed to be correct, their accuracy is not guaranteed and they do not form part of any contract.

Celebrating 30 years of successful Sales and Lettings in Merton

